

FOR LEASE

660

S Industrial Way

SEATTLE, WASHINGTON

15,191 SF INDUSTRIAL
& OFFICE SPACE

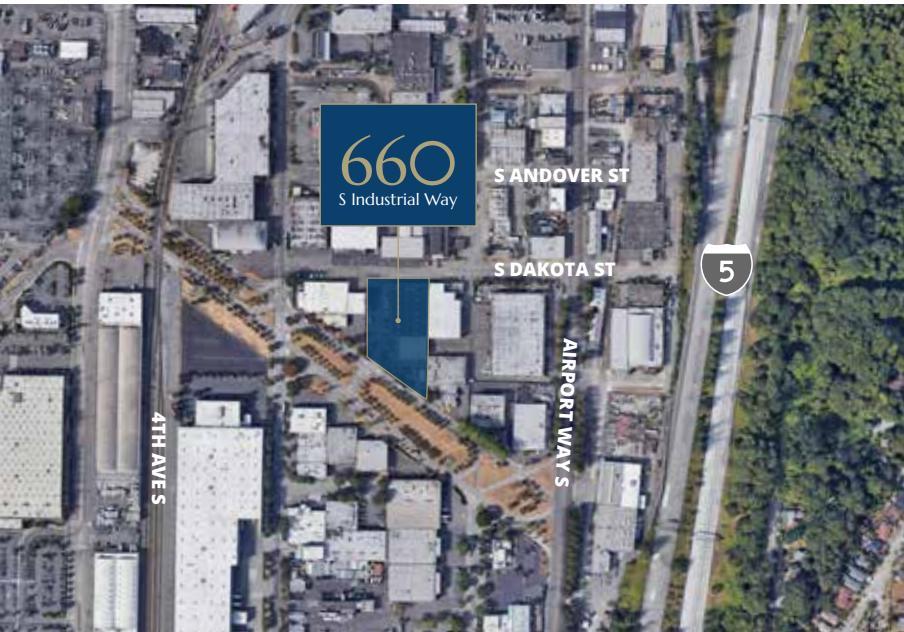
Opportunity Zone TI's Available





11,320 SF	3,050 SF	821 SF	66,770 SF	35,836 SF
INDUSTRIAL SPACE	OFFICE	SHARED SPACE	LOT AREA	TOTAL BUILDING

- 2 DH doors
- 15,7-20' clear height
- 821 SF of shared space
- Fenced and secured property
- Built in 1967
- Zoned IG2 U/85
- Signage available
- Easy access to freeways
- \$.25 estimated NNN
- Call for rates
- Available now



UNDER NEW OWNERSHIP

Prime South Seattle Industrial Building with Great Access

FOR LEASING INFORMATION CONTACT

EVAN LUGAR
206.248.6505 | evan.lugar@kidder.com

MATT MURRAY
206.248.6541 | matt.murray@kidder.com

OWNED BY
NITZE-STAGEN

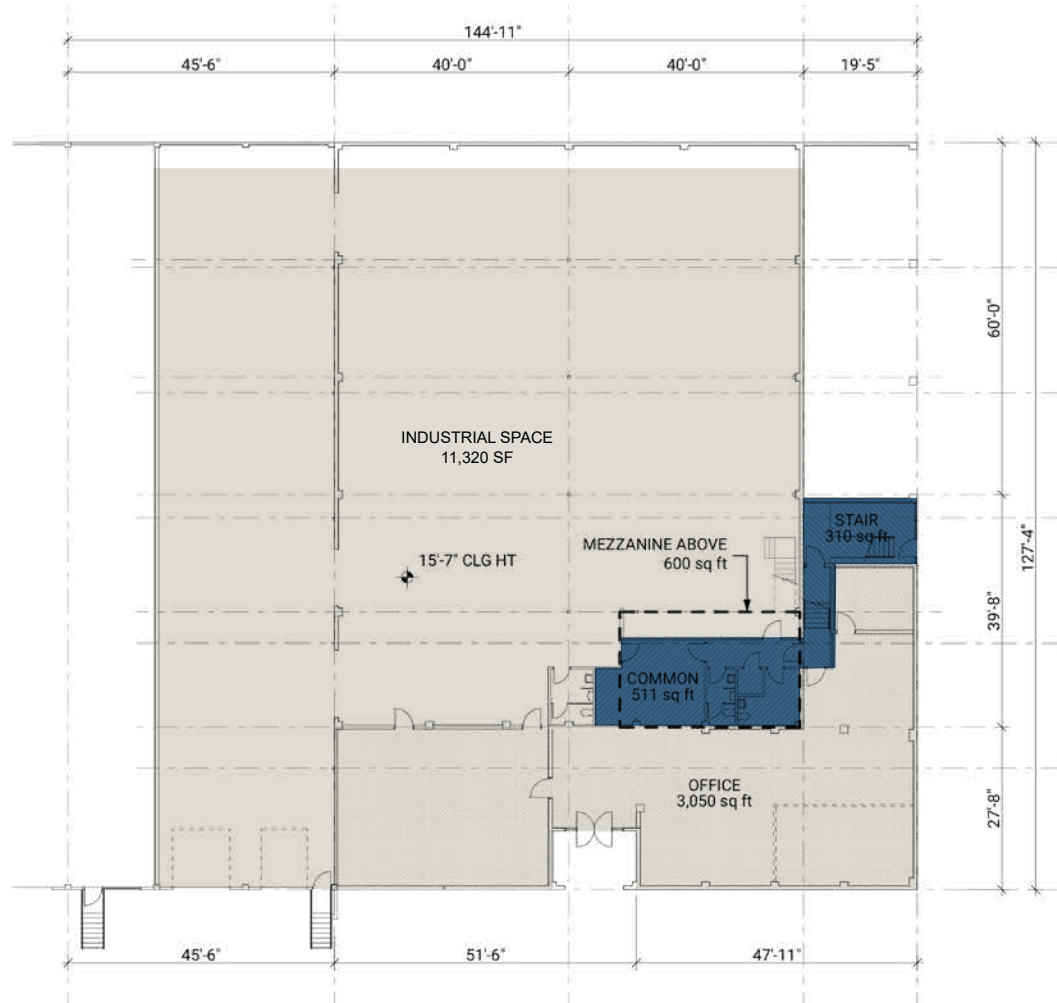
REPRESENTED BY
km Kidder Mathews

This information supplied herein is from sources we deem reliable. It is provided without any representation, warranty, or guarantee, expressed or implied as to its accuracy. Prospective Buyer or Tenant should conduct an independent investigation and verification of all matters deemed to be material, including, but not limited to, statements of income and expenses. Consult your attorney, accountant, or other professional advisor.

660
S Industrial Way

FOR LEASE

FLOOR PLAN



FOR LEASING INFORMATION CONTACT

EVAN LUGAR
206.248.6505 | evan.lugar@kidder.com

MATT MURRAY
206.248.6541 | matt.murray@kidder.com

OWNED BY

NITZE-STAGEN

REPRESENTED BY



This information supplied herein is from sources we deem reliable. It is provided without any representation, warranty, or guarantee, expressed or implied as to its accuracy. Prospective Buyer or Tenant should conduct an independent investigation and verification of all matters deemed to be material, including, but not limited to, statements of income and expenses. Consult your attorney, accountant, or other professional advisor.